



Nursery
Infants ~ Toddlers ~ Twos
Preschool
Pre-K Threes and Fours

Handbook

WESLEY MEMORIAL
A UNITED METHODIST CONGREGATION

1225 Chestnut Drive • High Point, North Carolina 27262

Phone: 336.884.4232 • Fax 336.884.4313

www.facebook.com/wesleymemorialschool

www.wesleymemorialschool.org

Table of Contents

Wesley Memorial School Calendar, 2021-22	3
Why our program?	4
Wesley Memorial School	5
Wesley Memorial School Mission Statement	5
Our Purpose.....	5
Wesley Memorial is a Safe Sanctuaries Church	5
Our Policies.....	6
Our Discipline Policy.....	6
School Schedule	6
Special Days.....	7
Bringing Items to School.....	8
Clothing.....	8
Snack/Lunch	8
Health/Transmission of COVID-19.....	9
Daily Waiver	12
Childhood Illness - When to Keep/Send a Child Home	13
 Tuition.....	 16
Nursery/Infants and Toddlers Class.....	
Our purpose	
Daily Class Experiences... ..	
Staff and Parent Communications	
Two Year Old Class.....	
Purpose:	
Daily Experiences.....	
Twos Seasonal Themes.....	
Pre K Threes and Fours... ..	
Program Objectives.....	
Curriculum	
Special Experiences.....	
Resource Units for Pre-K 3.....	
Resource Units for Pre-K 4.....	
Traditional Manuscript.....	

School Year 2021-2022

August 23, 2021



August 25	Staff Returns
August 30 – Sept 2	Orientation Visits for children
Thursday, Sept 2	Parent Night Meeting/visit classrooms (for parents only)
Monday, September 6	Labor Day Holiday – WM School Closed
Tuesday, September 7	First Day of School – All Ages
Monday, October 25	WM School Closed - (Staff Professional Development)
Thursday, November 11	Holiday-Veteran's Day: WM School Closed
Wed – Fri Nov 24 – 26	Holiday –Thanksgiving: WM School Closed
Mon, Dec 20 – Fri, Dec 31	Holiday – Christmas: WM School Closed
Monday, January 3	Teacher Workday: WM School Closed
Tuesday, January 4	WM School Re-opens for children
Monday, January 17	Holiday – Martin L. King Day: WM School Closed
Friday, February 25	Teachers Workday: WM School Closed
Thursday, March 3	WMS “Family Night” & Ice Cream Social! 6:30-7:30pm
Mon, April 11 - Mon, April 18	Holiday – Easter: WM School Closed
Tuesday, April 19	WM School re-opens for children
Sunday, April 24	Wesley Memorial School Sunday – 11am Worship
Tues, Wed and Thur, May 24-26	End of year picnic/programs Pre-K 3, 4, K
Thursday, May 26	Last Day of School

Why our program?

We follow many established quality education standards of the National Association for the Education of Young Children (NAEYC) and developmentally appropriate practices in early childhood programs. Through the Board of Education of the United Methodist Church, we completed requirements to achieve The W.I.S.E. Award (Wonderfully In Search of Excellence) in 2005. Wesley Memorial School is committed to providing parents a safe place to nurture their children as they begin their spiritual and educational journey. Our teachers are professionals with early childhood training and experience.

The program is administered by our Wesley Memorial School Board of Directors.

Children learn to think, explore, discover, and solve problems through intentionally planned “hands-on” experiences. It all looks like play because learning is fun! Our curriculum goals address social, emotional, cognitive, and physical growth.

Christian values are taught through our actions of sharing, taking turns, and being friends. Our Christian values are demonstrated and taught through our stories, songs, and prayer about God’s love for all his children. We strive to build positive self-concept. What a child thinks of himself is reflected by the way he relates to others both now and as he matures.

In addition to building Christian values, our qualified teachers work within an atmosphere that is warm, caring, open, accepting, and joyous.

By their signatures on the Registration Form, parents indicate their willingness to cooperate with the Christian emphasis of our program and to participate in programs and activities of the school designed to bring about a partnership in learning between teachers, parents, and children. Our Director, Associate Director, and teachers are available and encourage parents to contact them regarding special concerns and/or needs related to their child and our program.

“And the child grew and became strong, filled with wisdom, and the favor of God was upon him.”

Wesley Memorial School

Wesley Memorial School Mission Statement

Wesley Memorial School is a Christian school of excellence committed to caring for children and families in a safe, nurturing environment.

Our Core Values Are:

- Preparation –** Children are prepared for academic success in an environment of excellence and creativity.
- Nurture –** Children are nurtured through positive, supportive and caring relationships in a diverse community.
- Partnership –** A Christ-centered environment is provided as we partner with families in their child's spiritual formation.

Our Purpose

Our Purpose Is To Provide:

- An environment of Christian nurture and educational opportunities based on sound principals of early childhood development and quality care for young children.
- Opportunities for each child to enhance his/her learning, academic performance, and personal gifts.
- An educated and professional staff that is passionate about early childhood education.
- A Christian environment where teachers and families partner in nurturing a child's early development in social, moral, educational, and spiritual growth.
- A welcoming and inclusive Christ-centered community that embraces and cares for all children and their families.

Wesley Memorial is a Safe Sanctuaries Church

Wesley Memorial has long been an advocate of children and recognizes their uniqueness as individuals and as children of God. We are committed to providing a nurturing, safe environment free from emotional, physical and sexual abuse. All staff working with children are carefully screened. This includes our Wesley Memorial School Classroom Teachers, Substitute Assistants, Childcare Workers, Sunday School Teachers, and regular Volunteers. Criminal background checks are required as well as reference checks. Teachers receive annual training in prevention of abuse and are trained in Infant/Child CPR and First Aid.

Our Policies

Discipline Policy

Teachers at Wesley Memorial are encouraged to establish fair, simple rules and enforce them consistently. We incorporate redirection and positive reinforcement of good behavior models. Children are shown positive alternatives rather than just told “no.” Teachers use teaching statements to let children know what behavior is expected of them (“We build with the blocks.”) Teachers show children how their actions affect others. Teachers also model respect for the feelings of each person. A teacher may use a simple “time out” approach to change and redirect a behavior.

When the behavior of children is guided using this positive approach, the children...

- Learn to share and cooperate
- Are better able to handle their own anger
- Are more self-disciplined
- Feel successful and in control of themselves

Teachers at Wesley Memorial are not permitted to use any form of physical discipline. In addition, children will not be humiliated or verbally belittled by a teacher.

School Schedule

1. **Our school year for all ages begins on Tuesday, Sept 7, 2021.** Our school year concludes on Thursday, May 26, 2022.
2. **School Hours are 9 am – 1 pm.** Children may come no earlier than 8:50 am.
 - a. We cannot stress enough the importance of being on time. Children are happier and feel more secure when they arrive on time and can begin activities with their class.
 - b. Each child must be signed-in by a parent or caregiver at the classroom door or in the drive thru line with the teacher. Parent leaves the phone number where he/she or another responsible person may be reached in case of sickness or emergency. This is very important!
 - c. Parents are encouraged to use a positive approach in leaving their child. It is more difficult for children to separate themselves with lingering goodbyes. Wish your child a “*happy day*” as he/she leaves you to enter the classroom door or in the drive thru line.
 - d. *Breakfast should be eaten before children enter the building.*
3. **Dismissal time is 1pm**—please be prompt! Each child must be signed-out by a parent at the classroom door or in the drive thru line. Children have happier times when parents are on time and unhurried.
 - a. Each child is to be picked up only by adults with proper identification.
 - b. Should you need your children earlier than 1pm dismissal, please come to the School Office and allow us to secure your child.
 - c. Please do not forget to check your child’s cubby or backpack each day for creative work, notes from teachers, or event fliers.
 - d. Late Pick Up Procedures: You must contact the school office if you are going to

be late. There is a late pick up charge of \$1 per minute. Parent must park and enter through the main entry of the building and stop at the reception desk. The Director or Associate Director will be called.

4. In times of severe weather, decisions regarding delayed openings or cancellations will be made for our Wesley Memorial School independently of public schools. (Snow days will not be made-up or refunded.) Announcements will be broadcast:
 - a. Fox 8 TV High Point
 - b. WFMY 2 TV Greensboro
 - c. WXII TV Winston-Salem
 - d. Our WM School phone line, (336)884-4232
 - e. Our School Website: www.wesleymemorialschool.org
5. **If the weather should become bad enough** to cause hazardous driving conditions after your child has arrived for the school day, then come and pick him/her up before the roads become slick. In a half-day program, we do not make decisions for “early dismissals.” Use your best judgment and come while you can still manage to get back home safely.

Special Days

1. **Birthdays:** We will pay tribute to your child’s special day in a variety of ways, such as singing birthday songs, using verses, and letting him/her make special choices, birthday hats, etc. If a parent would like to bring in a simple birthday snack such as a special cookie or mini cupcake, this **MUST** be coordinated and cleared with the teacher. **Please, no party invitations, presents or balloons at school.**
2. **Special Seasonal Days** such as Fall, Christmas, Valentine’s Day and Easter will be observed throughout the year in such a way that we hope it will have a real meaning for children. There will be opportunities for families to bring in “special snacks” or to share food ingredients for class cooking activities. Teachers will schedule and help families plan for the holiday celebration.
3. **No candy or goodies of any kind are to be brought without first talking with the teacher.** No chewing gum, please. (Please check child’s pockets!) Parents must discuss with teachers any idea for sharing with the group.

Bringing Items to School

1. Each child will have a cubby in which to keep outer clothing, personal belongings, and creative work. Cubbies should not be used as mailboxes by others in an effort to send messages or invitations home to parents. Please handle correspondence between families outside of the classroom.
2. Each child will need to bring a book bag or backpack, or a diaper bag (Infants and Toddlers), for carrying items to and from school. It is helpful in selecting for

preschoolers a style that your child can open and close by him/herself. Also helpful is a bag that is sufficient in size to hold creative work and take-home notes.

3. Teachers will let families know if there are items that the class needs such as special craft supplies or special foods for a project.
4. Please leave toys at home. However, pacifiers or small cuddle items that help with feelings of security will be fine to bring. Books, musical CD's, and nature items are always welcome. Your teacher will let you know if your child has show-n-tell and will guide you with this.
5. Always confer with teachers before bringing a pet. Visiting animals must be fully immunized and in good health. Animals must be suitable for contact with children.

Clothing

1. Children should wear comfortable play clothes. Be sure your child has adequate clothing for outdoor activity on colder days, especially head attire. It is our goal to go outside every day; even if it is just for a few minutes to get some fresh air, change of scenery, and to break up the morning. Cowboy boots, slick hard-sole shoes, jelly shoes, "crocs," and flip-flops are not safe for climbing activities that children enjoy. Tennis shoes/sneakers are the best choice. Also, please *no jewelry*. Jewelry can be a safety hazard, particularly on playground equipment.
2. Please label all outdoor clothing: sweaters, coats, hats, and mittens

Snack

Parents will be assigned date(s) of shared turns for contributing mid-morning snack for entire class. Food that comes from home for sharing must be either WHOLE FRUITS OR COMMERCIALY PREPARED PACKAGED FOODS in factory-sealed containers. Parents are encouraged to select healthy choices – such as, cheese, fruits, squeezable yogurt, mini muffins, cereal. Children younger than three years old may not be offered the following foods in our program: hot dogs, whole grapes, nuts, popcorn, raw carrots, raw peas, or spoonful of peanut butter.

Lunch

Lunch time will be a part of our everyday. We want this to be a relaxed and joyful experience. Please adhere to the following guidelines concerning what to pack daily for lunch:

1. Small packs of finger foods (slices, diced, soft, or pre-cut) your child normally eats is best.
2. A drink for lunch (pouch or box are okay)
3. Foods that do not require our teachers to cook or heat.

Health

All families are asked to sign our WMS Health Agreement. This particularly addresses COVID-19 and other serious illness.

WMS Board of Directors requires all children to be immunized to attend our school.

1. When a child has a health care need requiring medication to be given at school—or stored in case of an emergency (i. e. epi pen)—parent must see Directors to complete proper forms and directions.
2. Food allergies can be serious. Documentation must be provided. Information concerning the allergy will be posted.
3. A First Aid kit will be available for use by teachers in the room.
4. In case of a health emergency, you will be notified. If you cannot be reached, we will use emergency contacts provided, including your child's doctor if necessary.
5. If you feel that your child should not play outdoors on any day, please arrange to pick him/her up at outdoor play time (check class schedule) because all teachers must be with the group while on the playground.
6. Each child is covered by accident insurance, as included in your Registration fee. If an accident does occur, it is the responsibility of parents to secure the correct forms from the office and have them filled out by the doctor.

Transmission and Symptoms of COVID-19:

COVID-19 is mostly spread by respiratory droplets released when people talk, cough, or sneeze. It is thought that the virus may spread to hands from a contaminated surface and then to the nose or mouth, causing infection.

Therefore, personal prevention practices (such as handwashing and staying home when sick) and environmental cleaning and disinfection are important principles to follow.

Symptoms may appear 2-14 days after exposure to the virus. People with COVID-19 have reported a wide range of specific and non-specific symptoms of COVID-19.

People with these symptoms may have COVID-19 (but this list does not include all possible symptoms):

- **Fever* or chills**
- **New cough**
- **Shortness of breath or difficulty breathing**
- **Fatigue**
- **Muscle or body aches**
- **New loss of taste or smell**
- **Sore throat**
- **Congestion or runny nose**

- Headache
- Nausea or vomiting
- Diarrhea

People with COVID-19 report a wide range of symptoms from no symptoms and mild to severe illness. Even people with no or mild symptoms can spread the virus. Children with COVID-19 may not initially present with fever and cough as often as adult patients.

***Fever is determined by a measured temperature of 99.9 °F or greater, or feels warm to the touch, or says they have recently felt feverish.**

WHAT HAPPENS IF OR WHEN (COVID-19)?

Each potential case or scenario will be addressed on a case-by-case basis, and we will refer to local and state officials for guidance.

1. If a child has displayed an elevated fever in two screenings upon arrival (5 minutes apart), the child may not stay at school. If a child displays a fever during the school morning or other concerning symptoms, the child will be escorted to a designated sick room to wait while parent/guardian is called for pick up.
2. Someone in my household has tested positive for COVID-19, but my child is not showing signs or symptoms? Can they come to school? NO, all members of the family must be quarantined for 14 days from the positive test.
3. A member of our extended family (outside the home) or good friend tests positive for COVID-19? Can my student still attend school? If your household has had no close contact (within 6 feet, without face coverings for longer than 15 minutes), then, yes, your child may attend school.
4. If a child is diagnosed with COVID-19, additional cleaning protocols will occur, the school will notify the local Health Department for guidance and families will be notified.
5. If a staff member is diagnosed with COVID-19, additional cleaning protocols will occur, the school will notify the local Health Department for guidance and families will be notified.

We will comply and coordinate with local health officials to notify staff and families while maintaining confidentiality in accordance with FERPA and all other state and federal laws.

Wesley Memorial School reserves the right to cancel or close the school due to widespread illness or pandemic.

The school will adhere to the following process for allowing a student or staff member to return to school:

- If a person had a negative COVID-19 test, they could return to school once there is no fever without the use of fever-reducing medicines and they have felt well for 24 hours.
- If a person is diagnosed with COVID-19 by a medical professional based on a test or their symptoms or does not get a COVID-19 test but has had symptoms, they should not be at school and should stay at home until they (or a family member if a younger child) can answer YES to the following three questions:
 1. Has it been at least 10 days since the individual first had symptoms?
 2. Has it been at least 3 days since the individual had a fever (without using fever reducing medicine)?
 3. Has it been at least 3 days since the individual's symptoms have improved, including cough and shortness of breath?

Wesley Memorial School – Daily Agreement/Waiver

- To my knowledge, the child I am dropping off does not have COVID-19
- There are no close contacts or household members with a confirmed case of COVID-19 nor are presenting any related symptoms
- The child I am dropping off does not currently have any of the symptoms listed below:
 - Fever (fever is determined by a thermometer reading above normal or by subjective signs such as flushed cheeks, fatigue, extreme fussiness, chills, shivering, sweating, achiness, headache, not eating or drinking)
 - Cough
 - Shortness of breath
 - Excessive runny nose
 - Runny nose presenting a consistent green color
 - Sore throat
 - Headache
 - Vomiting
 - Diarrhea
 - Loss of taste or smell
- My child has not been given any medication that could mask symptoms they are experiencing
- I understand that if any symptoms arise throughout the day in my child I will be notified and required to pickup within 30 minutes and then follow the Exclusion Policy provided
- I have read through and understand the policies provided to me

Childhood Illness - When to Keep/Send a Child Home

Certain symptoms in children may suggest the presence of a communicable disease.

Children with the following symptoms should be excluded from school until...

- (1) a physician has certified the symptoms are not associated with an infectious disease or they are no longer a threat to the health of other children at school, or
- (2) the symptoms have subsided for a full 24-hour period *without* medication. For example, children should be free of fever without the need for fever-reducing medication for 24 hours before returning.

Fever	<i>Auxiliary or Oral</i> temperature: 99.9 degrees F. or higher, or <i>Rectal</i> temperature: 101 degrees F. or higher; especially if accompanied by other symptoms such as vomiting, sore throat, diarrhea, headache and stiff neck or undiagnosed rash.
Respiratory	Difficult or rapid breathing or severe coughing: - child makes high-pitched croupy or whooping sound after he/she coughs. - child is unable to be comfortable due to continuous cough.
Diarrhea	<i>An</i> increased number of abnormally loose stools in the previous 24 hours. Parent will be called after a <u>second</u> occurrence of diarrhea that occurs during the school morning. Observe the child for other symptoms such as fever, abdominal pain, or vomiting.
Vomiting	Vomiting within the previous 24 hours.
Eye/Nose Drainage	<i>Thick</i> mucus or pus draining from the eye or nose. Child is unable to be comfortable due to continuous discharge.
Sore Throat	<i>Sore</i> throat, especially when fever or swollen glands in the neck are present.
Skin Problems	<i>Rash-skin</i> rashes, undiagnosed or contagious infected <i>sores-sores</i> with crusty, yellow or green drainage which cannot be covered by clothing or bandages.
Itching	<i>Persistent</i> itching (or scratching) of body or scalp.
Appearance/Behavior	Child looks or acts differently: unusually tired, pale, lacking appetite, confused, irritable, difficult to awaken.
Unusual Color	<i>Eyes or Skin</i> -yellow (jaundice) <i>Stool</i> -grey or white <i>Urine</i> -dark, tea colored

These symptoms can be found in hepatitis and should be evaluated by a physician.

*Parents are asked to please notify our school if your child develops a contagious disease.

**Follow the doctor's or nurse's advice about when to return to school. On return of child who has been out with a fever, we may choose to check child's temperature before allowing participation. We may also ask you to provide proof of treatment or negative COVID-19 test.

Staff/Parent Communication and Parent Involvement

1. Teachers will communicate through special notes, phone calls, text messages, and e-mails. Pictures of classroom activities will also be sent. ***Parents should not post pictures of children, other than their own, on their personal social media sites.***
2. Your child's teacher may use a shared Classroom Site. Parents use passwords to access their account, which communicates teacher blogs, calendar, special plans, family contact information, volunteer sign-ups, and photos of class events.
3. **Progress Reports** of your child's unique development, interests and special friendships will go home twice a year.
4. A wintertime Parent/Teacher conference will be held for our Pre-K 3 and Pre-K 4 children. Of course, should a parent of any age request a conference at any time, it will be arranged. Your child's teacher is a professional person. Please feel free to talk over with her any needs or concerns as they occur throughout the year. Also, the Director's door is always open!
5. Our Wesley Memorial School monthly newsletter will be a source of information for families throughout the year. The Director's office will send email through Constant Contact from time to time as an additional source of information.
6. Teacher's plans for the week/month are posted so that parents may know and follow-through at home. BE EMAIL AWARE for these types of communication.
7. Parent involvement greatly enhances the learning opportunities for children. We encourage parents to share their special talents, and to check for opportunities to participate in events throughout the year.

Drop off, Pick up and Carpool Safety Concerns

It is the law for each child to be in a car seat.

1. **Arrival: Drop off will begin at 8:50 am and conclude by 9:10 am.** For Nursery children (Infant, Toddlers and Twos): We recommend one parent or guardian to walk child in using one-way entry at Nursery side door. Your teacher will greet you and your child, check temperature and sign your child in and confirm health screening. Exit using the Nursery Patio door.
For children Pre-K 3 and Pre- K 4: Follow drive thru drop off procedures. Your teacher will greet your child at the car, check temperature, confirm health screening, and sign your child in. **For those with a younger and older child, drive thru for older child drop off first, then proceed to park and walk in younger child. If arriving after drive thru is complete, park and walk your child in using the main entry of the building. The reception desk will call the school office to check your**

- child in and walk them to their class.
2. **If arriving after drive thru is complete, park and walk your child in using the main entry of the building. The reception desk will call the school office to check your child in and walk them to their class.**
 3. **Dismissal:** For Nursery children (Infant, toddlers, and Twos): Only one parent or guardian to walk in at Nursery side door. Proceed directly to your child's classroom for sign out. Exit through the nursery patio door.
For children in Pre-K 3 and Pre -K 4: Follow drive thru pick up procedures. Your teacher will walk your child to the car. **If you need to help your child with their car seat, you may get out, assist your child as quickly as possible and proceed to exit. This will help keep the line from backing up.**
For those with a younger child and older child to pick up. Pick up the younger child first and then proceed to the drive thru line.

If you are in a carpool, go directly to and from school. No stopping on the way for any purpose without the consent of every parent in the driving pool. Insurance covers traveling directly between home and school. **If in a carpool, provide us with a list and schedule of all** by opening day of school. Please be sure your teacher is up to date with your carpool schedule and/or who will be dropping off and picking up your child.

Please Remember - Release Policy

We will not release a child to anyone other than his/her parents without a written note from the parents. This applies to relatives, sitters, and friends. Parents may give "blanket permission" (specified on the pick-up card) for specific persons who will be involved in child's care and will need to pick-up child frequently. **We MUST have a written note from parents if your child is going home with a friend.** If there is an emergency that will affect who will be picking up your child, please call the school office.

Tuition

- Registration fee is \$100.00 for 1st and 2nd child. And, \$40.00 for 3rd and 4th child.
- The registration fee includes insurance. Registration fee is non-refundable.
- The REGISTRATION FEE MUST BE PAID WITH APPLICATION to assure child's place.
- Registration fees are paid by cash or check payable to Wesley Memorial School.

TUITION FOR NURSERY (Infants, Toddlers, Twos)

2 days = \$180.00/month

3 days = \$230.00/month

5 days = \$325.00/month

TUITION FOR PRESCHOOL (Threes & Pre-K Fours)

2 days = \$195.00/month

3 days = \$245.00/month

5 days = \$325.00/month

(Includes Age Level Activity Fee)

Direct Payment Policy

1. WMS will require all **tuition** payments to be set up on draft authorization through a Direct Payment Authorization Form obtained through the school administrative office. The draft will occur on the 5th of the month, September through May. **This service will not deduct registration or other fees that may be incurred.**
2. An insufficient fund fee of \$20.00 will be assessed for all returned checks or draws.
3. **Monthly tuition is paid in full, regardless of enrollment date and/or absenteeism and snow days.**
4. **Tuition holds and ensures a child's placement. If a parent delays enrollment, tuition will be charged.**
5. Tuition is due for the entire month in which the withdrawal of a child occurs unless the Director is notified in writing of such withdrawal at least 30 days prior.
6. When tuition is due and payable from previous school year or from the summer program, the child will not be re-enrolled in another program (summer or fall) until the full amount is paid up to date.

NURSERY - Infant and Toddler Classes

Infants (Beginner room – 3 months and above)

Toddlers (14 months+ securely walking and able to sit at table)

Our purpose...

- To provide a secure, happy and loving developmental environment **for infants and children in the toddler stage.**
- To introduce a variety of early social and learning activities.
- To begin developing positive, secure relationships with other adults other than Mom and Dad.
- To learn to interact and share with other children.

Daily Class Experiences: A flexible schedule yet each day includes...

1. Floor-Play. A variety of soft, colorful manipulative toys are used to develop language, social and emotional growth.
2. Manipulative toys —develop hand-eye coordination. These toys include blocks, puzzles, stacking toys of various shapes and colors. Teachers interact with these little ones introducing colors, shapes, language development, and visual discrimination. Every moment is a learning moment.



3. Music and game time —songs, finger-plays, dancing/bouncing, even simple musical instruments—all for enjoyment of sound and rhythm.
4. Books, Books, Books! A variety of board and cloth books for reading, listening and talking about.
5. Toys to promote gross motor skills – Toys for pushing, riding, and crawling and walking —help develop large muscles for infants who are mobile and toddlers.
6. Infant Swings—for relaxation and movement and comfort.
7. Snack Time—develops hand and eye coordination, using cup or learning to hold own

bottle; picking up Cheerios (when ready) and other finger-foods. For toddlers, learning to sit at the table is a very social developmental experience.

9. Diapering occurs throughout the day as needs occur in addition to specific times for changing and refreshing.

8. Outdoor Experiences! — Our toddlers enjoy a specially designed playground just for them to crawl, climb, pull up, and exercise their muscles. For our infants, outdoor time is a stroller ride around the campus to get fresh air and enjoy all the sights and sounds of the outdoors.

Staff and Parent Communications

1. Our staff is so caring and professional in understanding needs of children and the value of interaction and consistency.
2. We will ask about your child's schedule and routines at home. We seek to make your child's day as much an extension of his/her home life as possible.
3. Parent will complete a *Parent-Teacher Information sheet*. We find it helpful to have your special instructions about feedings, naps, or ointments written down on this sheet. During the day, our teachers will make (brief) notes to let you know how your child spent his/her day.
4. You will receive written **Progress Report** of your child's unique development, play interests and special friendships.
5. Parents will receive monthly newsletters from the school, emails or texts from teachers, and will be a part of your child's class information site. The site is a wonderful place to see pictures of happenings in the classroom, keep up with themes of the month, and special announcements.



2-year-old Class

2-year-old – the transition year

The 2-year-old year is a transition year. This is the year that the child learns to be a part of a class and the movement of a classroom with more controlled schedule of activities and choices. Socially and emotionally the 2-year-old is moving from a very self-centered point of view to understanding they are a part of bigger world, beginning with their classroom. In addition, language development is rapid, and vocabulary increases greatly during this year.

Our purpose...

- To help children feel secure when separating from parent or caregiver.
- To provide a secure, happy and loving environment with developmentally appropriate learning goals and activities.
- To provide experiences for social, emotional, language, cognitive, motor and spiritual growth.
- To learn to interact and share with peers and to take direction and guidance from teachers.
- To learn important self-help skills such as hand washing, on and off coat, toilet awareness and practice.

Daily Class experience:

- **Guided floor and center play** with a variety of teaching toys and experiences. These include puzzles, dress up and housekeeping play, blocks and building.
- **Art and/or sensory** activity led by the teacher.
- **Outdoor play** on a specially designed playground just for our 2-year-old classes. Indoor playtime occurs in our gym complete with a variety of indoor play equipment; such as, tunnels, riding toys, push toys, and balls.
- **Snack time.**
- **Circle time.** This is a time for the class to sit together and listen to a story, sing songs, play games, finger plays and talk about the calendar and weather.
- **Potty time/diapering time.** Occurs as needed throughout the morning in addition to a scheduled time for this.



Seasonal Themes for Twos

SEPTEMBER:

Jesus Loves Me-

- My Family/My Home
- My School
- Apples
- Color of the Month - Red

OCTOBER:

Be Strong and Courageous-

- Fall Days
- Pumpkins
- Safety / Firefighter friends
- Color of the Month - Orange

NOVEMBER:

Give Thanks to the Lord, for He is good-

- We say Thank you, God!
- Thanksgiving Day
- Color of the Month: Brown

DECEMBER:

Jesus was born in Bethlehem-

- Baby Jesus and Christmas Day
- Sights, sounds and smell of Christmas
- Sharing our gifts
- Color of the Month: Green

JANUARY:

For everything there is a season-

- Winter weather
- Animals of winter
- Color of the Month: Blue

FEBRUARY:

Let us love one another-

- Valentine's Day/Love
- Taking care of our teeth
- Color of the Month: Pink

MARCH:

Be kind to one another-

- Changing weather
- St. Patrick's Day
- Night and Day (pajama day fun)
- Color of the Month: Black / White

APRIL:

God made everything-

- Spring is here
- Easter Joy / New Life
- Color of the Month: Purple

MAY:

The Earth is the Lord's, and all that is in it-

- Farm animals
- Spring flowers
- Show love on Mother's Day
- Color of the Month: Yellow



Pre-K Threes and Pre-K Fours

General Program Objectives:

1. To provide many positive learning experiences for social, emotional, cognitive, and language development.
2. To provide opportunities for self-expression through language, music, art, and play experiences.
3. To provide situations in which the child can develop a positive sense of self.
4. To understand the flow and movement of a classroom through center time activities, for future school success.
5. To develop an atmosphere in which creativity is stimulated.
6. To engage in Faith based learning and to appreciate and understand that they are a child loved and created by God.



Our Curriculum: Is carefully designed with monthly themes to enhance all aspect of child development and include goals in reading, science, math, social studies, music, art, health and safety. Children learn best through play and hands on experiences in each classroom's learning centers. Learning activities include music, art, story time, puzzles and games, cooking, science and wonder. Our guidelines we follow are provided by the Department of Public Instruction of North Carolina and based on sound principles of early childhood growth and development through criteria established by the *National Association for the Education of Young Children (NAEYC)*.

Our curriculum is ***Kindergarten Readiness and progresses through all age levels***. One of our curriculum tools for ***Kindergarten readiness*** is the "Get Set For School" workbook for Pre K Fours. Pre K Three and Pre K Four children work through basic concepts in letter writing, numbers, counting, and early reading skills.

Children learn through play and hands-on experiences. Throughout the morning children rotate through free play and center activities carefully designed to be developmentally appropriate and to allow for lots of social, emotional, and skill development. In addition, children will have teacher lead circle time with music, stories, calendar activity, games, and group learning. Center time also includes the use of classroom

computers and technology equipment.

Christian Education. As a part of the United Methodist Congregation, children learn that they are loved and created by God. Children have experiences in Chapel, sing songs of Praise and Thanksgiving, learn Bible verses and learn to say a blessing before eating.

Special Experiences – (there will be no outside visitors until after the COVID-19 crisis)

Eco Room – Children get to experience God’s wonderful world and take part in lessons in earth science, conservation, and ecology.

Creature Teacher – Once a month our children get a special animal science lesson. Karen Finch is our Creature Teacher. She is fully licensed and brings some of God’s most unique creatures to share with the children. An example of the animals that she will bring are the chinchilla, porcupine, and sugar glider.

Visits from the Police Officer and Firefighters – These visits go with our safety and community helper units.

Special Experiences for our Pre-K Three and Four classes in addition to the above:

Music and Movement – Once a month the children will learn songs and have fun with movement.

Chapel Time – Once a month the children go to Chapel either indoors in the Chapel or Sanctuary, or in the Outdoor Chapel. This is a time for singing, Bible stories, Prayer, and conversation.



Pre-K 3 – Monthly Resource Units:

SEPTEMBER:

God cares about you-

- All about me
- At School – new friends, new room
- In my family
- Apple days

OCTOBER:

Stop and consider the wondrous works of God-

- God's world in the Fall
- Pumpkin time
- Fire Safety

NOVEMBER:

We give thanks to God-

- Thank you, God
- The First Thanksgiving Day
- Farm to table

DECEMBER:

You will find a baby lying in the manger-

- Advent Time – preparing for Christmas
- Jesus was a baby
- Sharing gifts with others
- Sights, sounds, and smells of Christmas

JANUARY:

To everything there is a season-

- It's Winter
- Animals in the winter
- Caring for ourselves

FEBRUARY:

We love because God first loved us-

- Valentine's Day
- Sharing and showing love
- Dental Health

MARCH:

This is the day that the Lord has made-

- Spring weather?
- Night and Day (Pajama Day Fun!)
- St. Patrick's Day
- Community Helpers

APRIL:

God has made everything beautiful-

- Spring -new beginnings
- Easter Joy
- Baby Animals
- Nature/ how things grow

MAY:

The Earth is the Lord's, and all that is in it-

- We show Love on Mother's Day
- Fun on the farm
- Ready for summer

Pre-K 4 – Monthly Resource Units:

SEPTEMBER:

Love one another-

- All about me and my family
- Where do I live? (address, a look at our state)
- Apples / Johnny Appleseed

OCTOBER:

God has made everything beautiful in its time-

- It's Harvest time - pumpkins
- All about Fall – God's changing world
- Fire Safety / 911

NOVEMBER:

We give thanks to you, God-

- The First Thanksgiving
- Being thankful to God and helping those in need
- Our Country / Veteran's Day

DECEMBER:

Jesus was born in Bethlehem-

- Advent Season
- The Christmas Story
- Sharing our love and gifts

JANUARY:

And, the child grew and became strong-

- God's world in the winter
- Animals/hibernation
- Jesus grows up
- Countries and cultures around the World

FEBRUARY:

Let all you do be done in love-

- It's Valentine's Day
- Sharing God's Love
- My Five Senses / Healthy bodies

MARCH:

He makes the winds blow and water flow-

- Seuss/Literacy
- Weather
- St. Patrick's Day
- Community helpers/Occupations
- Visits: Police Officer, Veterinarian, Dentist, Doctor

APRIL:

Stop and consider the wondrous works of God-

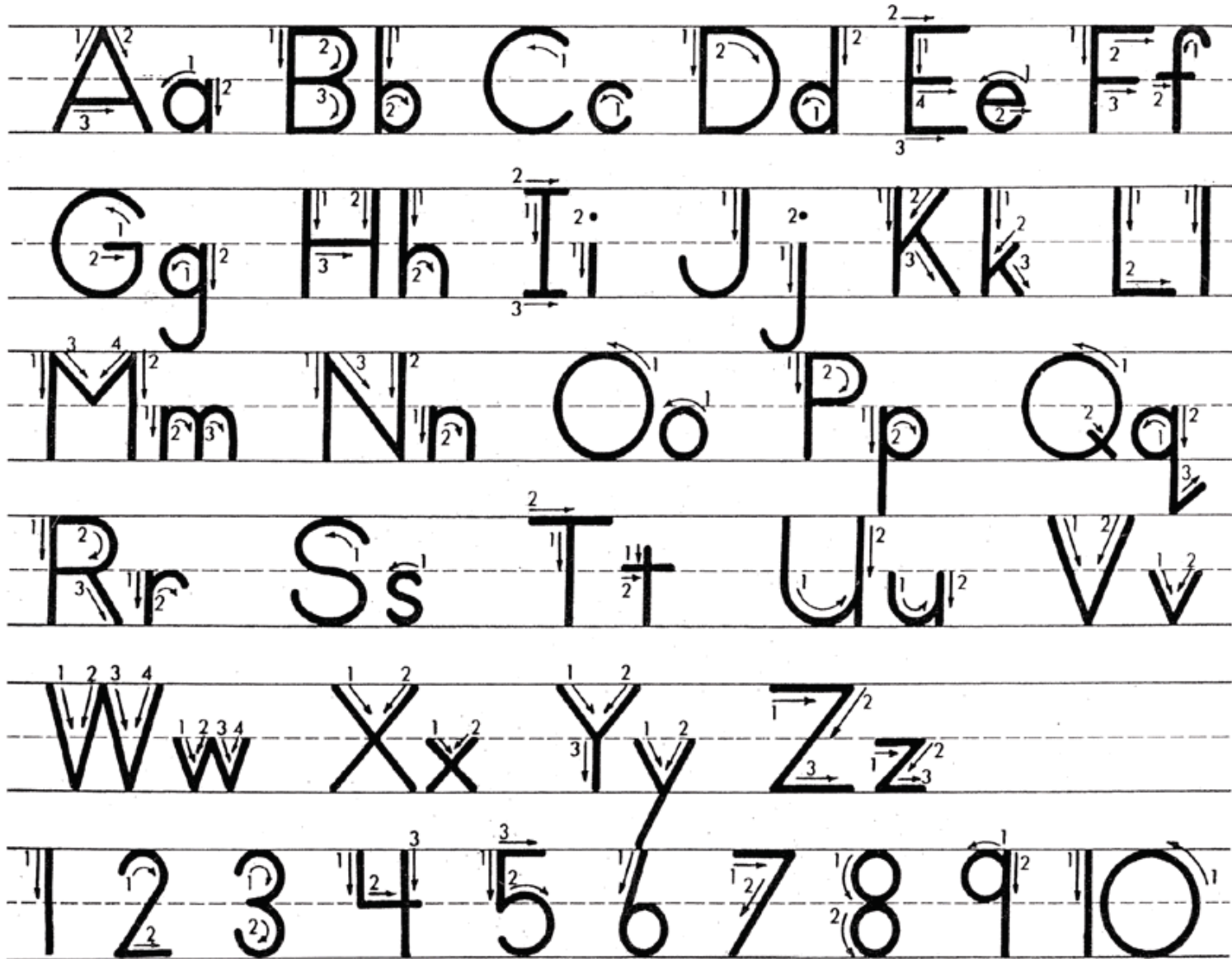
- Looking for Signs of Spring in God's World
- Life Cycles in nature
- Easter Joy

MAY:

Growing in every way more and more like Christ-

- How things grow
- How I've grown
- Mothers are special

Traditional Manuscript



* **To Parents:** As you write your child's name and make other labels to mark toys and belongings, **be sure to print just as the word would appear in a book.** Do *not* use all capital letters. For example, print *Jim*, not *JIM*. This gives your child real experiences with name recognition and print awareness that will not have to be "re-taught" later.

To My Child's Teacher...

Take My Child by the Hand



My child starts to school tomorrow.

It's all going to be strange and new to him for awhile,
And I wish you would sort of treat him gently.

You see, up to now, he's been "king of the roost:"

She's been "boss of the backyard:' I have always been around to repair her wounds,
And I've always been handy to soothe her feelings.

But now . . . things are going to be different.

This morning my child is going to enter his classroom, wave his little hands,
And start on a great life-adventure!

To live his life in the world he has to live in will require
FAITH and LOVE and COURAGE.

So, teacher, I wish you would sort of take my child by her young hand
And teach her the things she will have to know.

Teach my child, but gently, if you can.

Teach him the wonders of books. Give him quiet time to ponder God's creations
The eternal mystery of birds in the sky, bees in the sun,
And flowers on the green hill.

Teach her about the world of work
Teach her that it is far more honorable to fail than to cheat.

Teach him to have faith in his own ideas,
Even if friends tell him that they think something differently.

Try to give my child the strength not to follow the crowd when everyone else is on the
bandwagon.

Teach him to listen to all persons ... but then to filter all he hears on a screen of truth
And to take only the good that comes through.

Love my child.

Teach him gently, but don't coddle him, because only the test of fire makes fine steel.



This is a very big order, teacher, but please see what you can do.

What a precious gift from God, my child.